



# UNIVERSITY OF THE PHILIPPINES

*Shaping minds that shape the nation*



[Home](#) [About UP](#) [Administration](#) [Academics](#) [Admissions](#) [Students](#) [Research](#) [Alumni](#) [Transpa](#)

The country's national university  
June 18, 1908 through Act No 1870  
April 19, 2008 RA 9500

## Campuses

The University of the Philippines (UP) is the country's national university. This premier institution of higher learning was established in 1908 and is now a university system composed of seven constituent universities and one autonomous college spread throughout 15 campuses in the archipelago. As of 2012, the UP System's student population was at least 57,000.



**7 CUs, 1 autonomous  
College, 15 campuses**

258 undergraduate programs  
438 graduate programs



30 out of 31 National Scientists; 34 out of 57 National Artists; 7 of 14 Presidents of the Republic; 12 Chief Justices of the Supreme Court



College of Pharmacy  
University of the Philippines Manila

# University of the Philippines Manila

The Health Sciences Center

Colleges

Campus Life

Support Services

Performance in Licensure

College of Allied Medical Professions

College of Arts and Sciences

College of Dentistry

College of Medicine

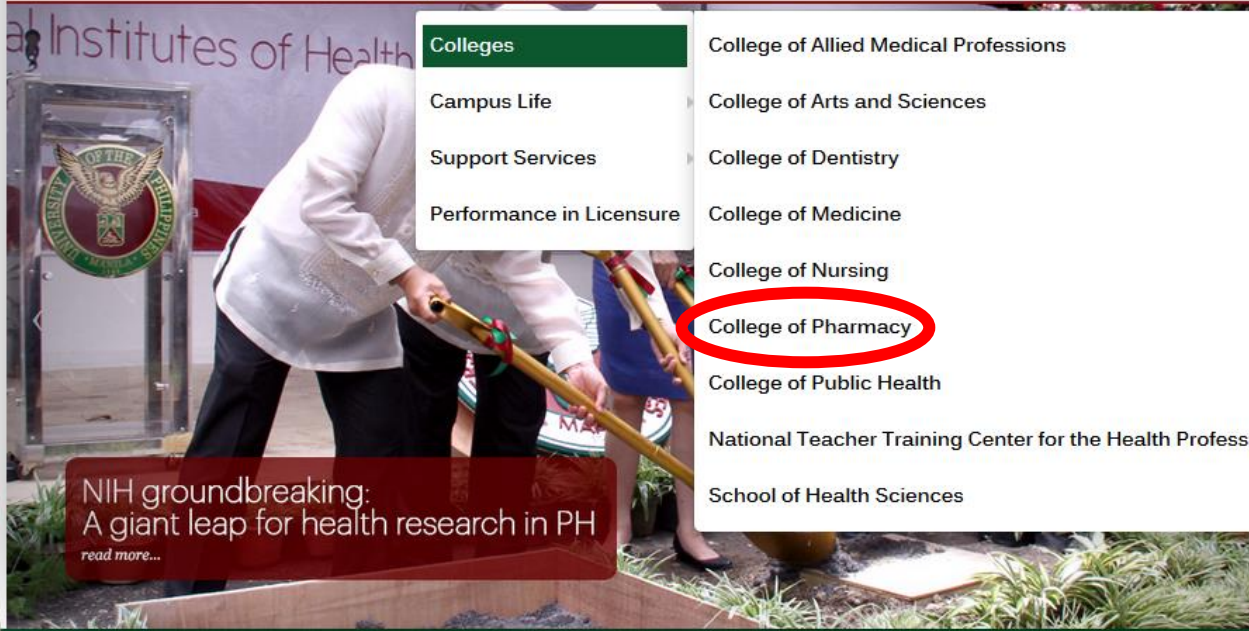
College of Nursing

College of Pharmacy

College of Public Health

National Teacher Training Center for the Health Professions

School of Health Sciences



NIH groundbreaking:  
A giant leap for health research in PH  
read more...





**College of Pharmacy  
University of the Philippines Manila**

# Vision and Mission



**Excellence in pharmacy, from  
science to practice**

***The College of Pharmacy: serving  
through transformative education  
and translational research.***



**College of Pharmacy  
University of the Philippines Manila**

# Course Offerings

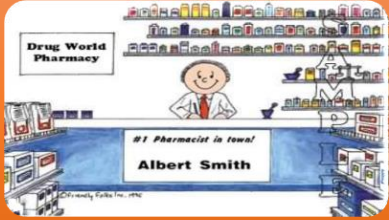
Bachelor of Science in Pharmacy

Bachelor of Science in Industrial Pharmacy

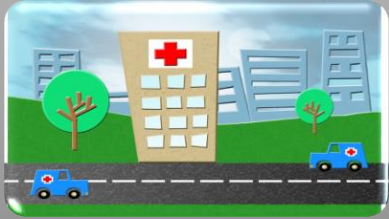
Master of Science in Pharmacy



# Internships



Community pharmacy internship  
(Phar 180.1)



Hospital pharmacy internship  
(Phar 180.2)



Manufacturing pharmacy internship  
(Phar 180.3)



College of Pharmacy  
University of the Philippines Manila

# Community pharmacy internship

- 200 hours in the drugstore
- 3<sup>rd</sup> year BS Pharmacy and BS Industrial Pharmacy
- 10 days community immersion (CHDP – Community Health Development Program)
- A partnership among the University, the Local Government and its people where **planning, implementation, monitoring and evaluation** are done with the **active participation of the community**





# Colleges involved

- College of Allied Medical Professions
- College of Arts and Sciences
- College of Dentistry
- College of Medicine
- College of Nursing
- College of Pharmacy
- College of Public Health
- College of Home Economics
- College of Social Work & Development
- Department of Family and Community Medicine
- Department of Internal Medicine
  - Section of Dermatology
- Department of Internal Medicine
  - Section of Endocrinology
- Department of Pediatrics



# Community immersion



College of Pharmacy  
University of the Philippines Manila

# Some examples of programs

CASE	INTERVENTION	OUTCOME
Underutilization of services provided by the barangay health center (BHC); problems with medication supply and use	Pamphlets and short lecture on generic medicines and rational medicine use Survey on community drug utilization Preparation of list of medicines to be procured	<ul style="list-style-type: none"><li>• Improved knowledge on generic medicines and rational medicine use</li><li>• Verbalized expression of appreciation for the role of pharmacists in health information provision</li><li>• 22/24 surveys completed</li></ul>



# Some examples of programs

CASE	INTERVENTION	OUTCOME
Problems with supply management of PhilPEN medicines	<p>Preparation of lecture materials</p> <ul style="list-style-type: none"><li>• Reorientation to PhilPEN</li><li>• Commonly used medicines in the community</li><li>• Proper inventory and storage of medicines</li></ul> <p>Endorsement to next set of medical interns</p>	<ul style="list-style-type: none"><li>• Lecture did not push through due to absence of target participants (BHW's)</li></ul>



# Lessons from Community Immersion

- Students learn first hand what the problems are in the community, rural health units (RHUs)
- Learn to work in groups in identifying problem then finding a solution for the problem
- Learn to live/ experience life in the community → foster families during their 10 day stay in the community



# Interprofessional Care Program

- Pharmacy 185: Public Health Pharmacy
- 5<sup>th</sup> year students BS Pharmacy
- 4 Fridays in the community
- Assigned by 2s
- Work with students from other Colleges
- Individual-based or population-based program

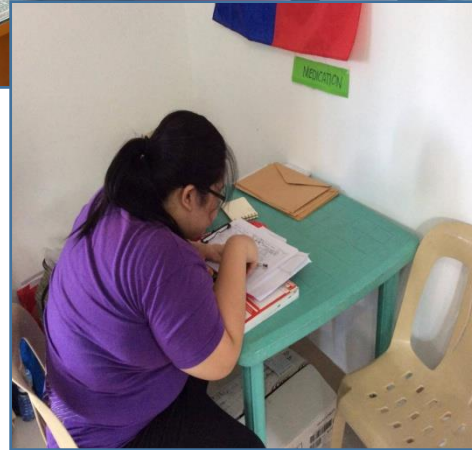


# Colleges involved

- College of Allied Medical Professions
- College of Arts and Sciences
- College of Dentistry
- College of Medicine
- College of Nursing
- College of Pharmacy
- College of Public Health
- College of Home Economics
- College of Social Work & Development
- Department of Family and Community Medicine
- Department of Internal Medicine
  - Section of Dermatology
- Department of Internal Medicine
  - Section of Endocrinology
- Department of Pediatrics



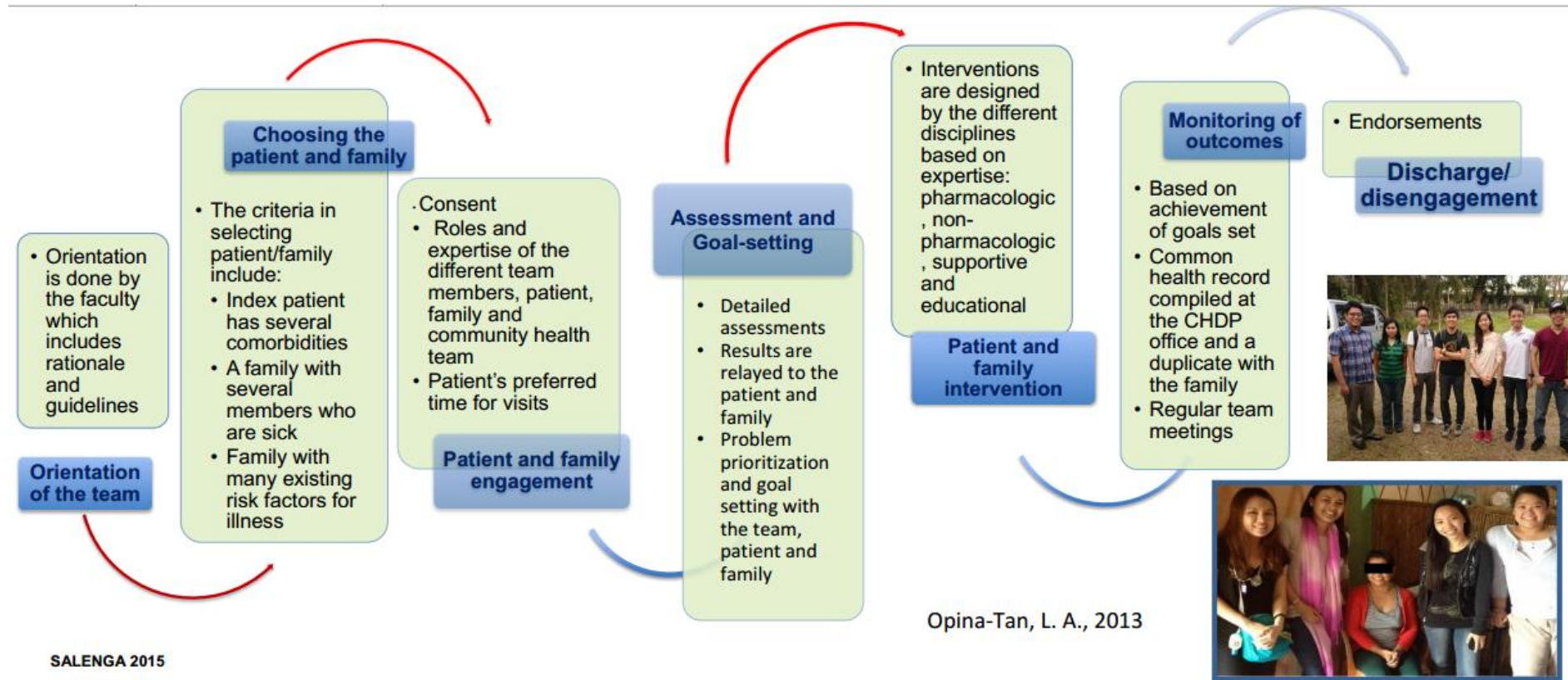
# IPC Program in action (Population-based)



College of Pharmacy  
University of the Philippines Manila



# IPC Program



SALENGA 2015



# Some interventions

CASE	INTERVENTION	OUTCOME
<p>67 year-old female</p> <p>Post-stroke with left-sided weakness, slurring of speech, and persistent headaches</p>	<p>Education of patient and caregivers</p> <ul style="list-style-type: none"><li>• Residual effects and complications of stroke</li><li>• S/sx of stroke (in case of recurrence)</li><li>• Activities to gauge and improve cognitive ability</li><li>• Lifestyle modifications</li><li>• Therapeutic communication techniques and use of a communication board</li></ul> <p>Referral to occupational and speech therapy</p> <p>Medication counseling</p>	<ul style="list-style-type: none"><li>• Verbal demonstration of increased understanding</li><li>• Verbal demonstration of increased understanding</li><li>• Increased dexterity in holding and using a pen</li><li>• Verbal expression of desire to follow proposed modifications</li><li>• Utilization of communication board leading to better understanding among members of the family</li><li>• Verbal affirmation of attendance once schedule is finalized</li><li>• Adherence to treatment regimen</li></ul>



# Some interventions

CASE	INTERVENTION	OUTCOME
41-year old male Gouty arthritis	Discussion <ul style="list-style-type: none"><li>• Proper wound care and management</li><li>• Pathophysiology of the disease</li><li>• Patient's use of herbal supplements</li></ul> Suggestion of liver function tests at next checkup Medication counseling	<ul style="list-style-type: none"><li>• Increased understanding of the disease</li><li>• Reinforcement of patient's use of herbal supplements; corrected after by medical interns</li><li>• Increased understanding of medications</li></ul>



# Some interventions

CASE	INTERVENTION	OUTCOME
<p>70 year-old female</p> <p>Post-stroke with left-sided weakness</p>	<p>Monitoring of patient's condition</p> <p>Education of patient and caregivers</p> <ul style="list-style-type: none"><li>• DASH diet</li><li>• Strategies to cope with stress</li><li>• Basic motion exercises</li><li>• Proper bed transfer and home rehabilitation techniques</li></ul> <p>Medication counseling of patient</p> <p>Medication counseling of patient's husband, a hypertensive who is non-adherent to his meds</p> <p>Switching from amlodipine to enalapril as per patient's request</p>	<ul style="list-style-type: none"><li>• Good BP control</li><li>• Improved mood</li><li>• Improved muscle strength</li><li>• Demonstration of techniques</li><li>• Adherence to treatment regimen</li><li>• Verbal expression of desire to resume medications</li></ul>



# Some Lessons from the IPE

- Appreciation of the different roles of the members of the health care team
- Learn to work together (communicate and respect) with students from different colleges (who are the future members of the health care team)

